



**CIHEAM**

**General Secretariat**

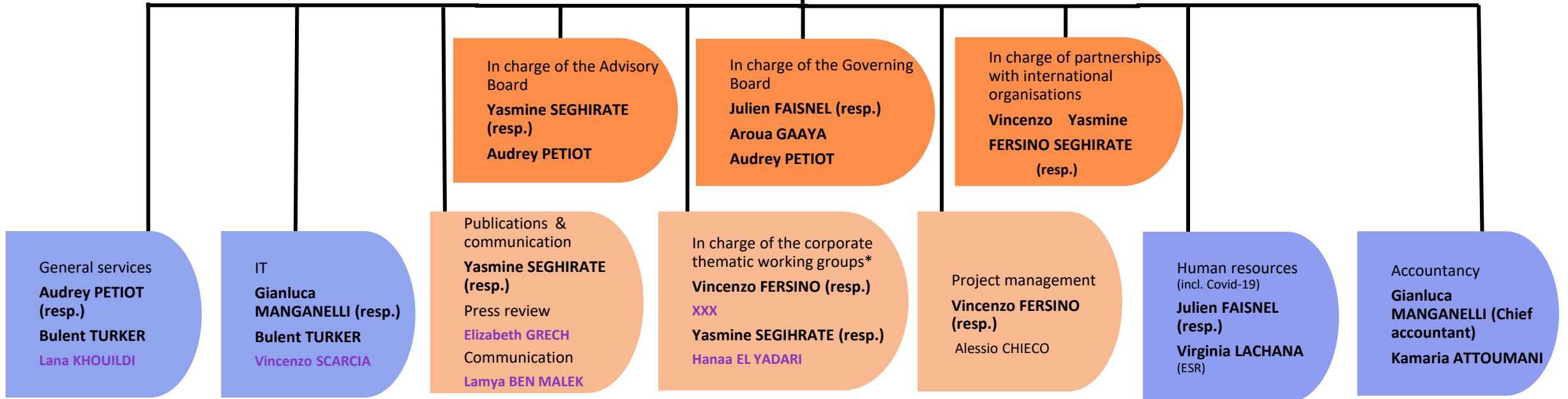
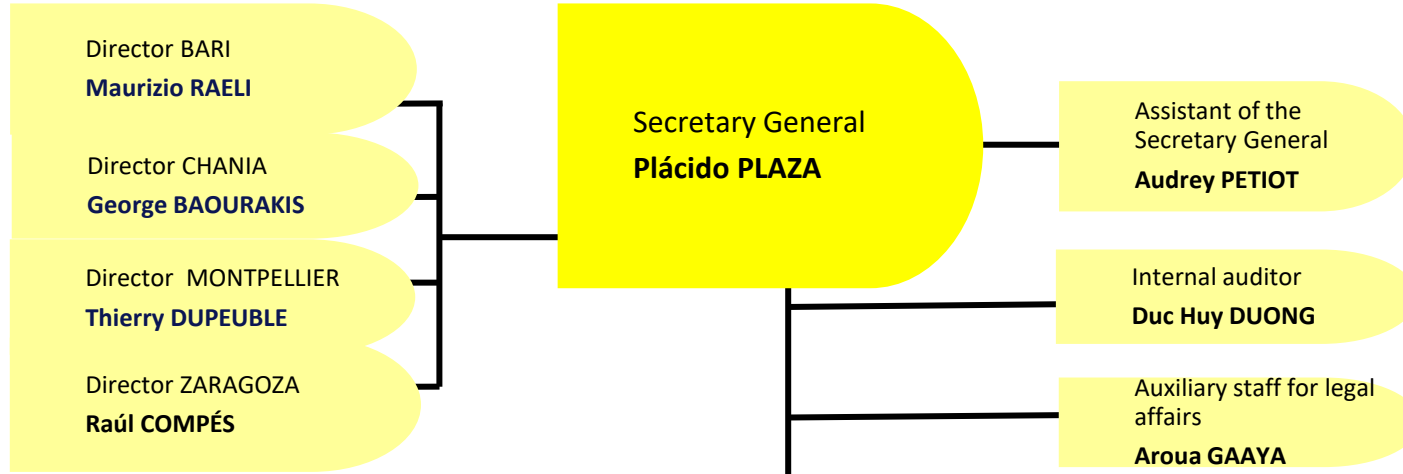
**Direction**

**Institutional Relations**

**Activities and projects**

**Supporting positions**

Contact :  
[secretariat@ciheam.org](mailto:secretariat@ciheam.org) or  
01.53.23.91.00



\*Corporate thematic working groups :

Sustainable food systems / Sustainable management of coastal zones and fisheries /  
Youth empowerment and socio-economic inclusion / Women empowerment and socio-economic inclusion

Translation  
Elizabeth GRECH - Maria AMORUOSO

